



# INFORMATION GUIDE



T: +27 21 424 8181  
info@tablemountain.net  
www.tablemountain.net



## CABLE CARS

The cable cars have a carrying capacity of 65 people, transporting approximately **800 people per hour**.

Maximum speed is **10 metres per second**.

The cables weigh **18 tonnes** and are 1.2km each in length.

Each cable car can carry a weight of **5 200kg**.

Similar **rotating cable cars** are in use at Mount Titlis in Switzerland and in Palm Springs, USA.

The base of the cable cars have built-in water tanks carrying **3 000 litres** of water used for ballast in the windy season and to supply fresh water for visitors.

The cables are attached to counter weights, each weighing **134 tonnes**.

The cable cars are round to provide a **360° view**, and to be aerodynamic in high winds (which means a smoother ride for you).

## IT'S A FACT



Table Mountain Aerial Cableway has been operating since **4th October 1929**.



To date more than **28 million visitors** have enjoyed the thrill of the Cableway experience.



The height of Table Mountain at its highest point, **Maclear's Beacon**, is **1 085m above sea level**.



TABLE MOUNTAIN WAS VOTED ONE OF **THE NEW 7 WONDERS OF NATURE** IN 2011.

The other New 7 Wonders of Nature are:

- Amazon, South America
- Halong Bay, Vietnam
- Iguazú Falls, Argentina/Brazil
- Jeju Island, South Korea
- Komodo, Indonesia
- Puerto Princesa Underground River, Philippines



## COULD THIS BE THE WORLD'S OLDEST MOUNTAIN?

Consisting of layers of **Table Mountain Sandstone and Cape Granite** formed by igneous and glacial action **520 million years ago**, **Table Mountain is at least 6 times older than the Himalayas**, making it **one of the oldest mountains in the world**.

The Cape's original Khoi inhabitants named the mountain "huri +oaxa" (Hoerikwaggo), meaning "Mountain of the Sea". Located at 33° 56' S, it's the jewel of the peninsula that was named Cabo da Boa Esperanza (or 'Cape of Good Hope') by early Portuguese explorers. To Nelson Mandela and fellow freedom fighters imprisoned on Robben Island, it always represented a tantalising reminder of freedom.

The mountain's famous tablecloth is a meteorological phenomenon that causes cloud to tumble down the mountain slopes like billowing fabric.

This phenomena is known as 'Kaggen's Karos' after the San tale of how Kaggen, the mantis god, pulls a white karos (animal pelt) from his mountain cave to quench fires on the mountain. A later explanation was that a Dutch pirate, Jan van Hunks, challenged the devil to a smoking contest that persists to this day.

**Table Mountain is many things to many people. To Capetonians it's the geological and spiritual heart of our city.**

## THINGS TO DO



Spectacular Views



FREE daily guided walks on the hour from 09:00 - 15:00



Enjoy a delicious meal with a view at the Table Mountain Café



Purchase a memento to remember your visit



Listen to the Table Mountain Audio Tours on VoiceMap



Use the FREE Wifi in our unique Wifi Lounge

## A KINGDOM OF NATURAL WONDER

The crown jewel in the Cape Floristic Region, Table Mountain is home to an incredible diversity of endemic species. The Cape Floral Kingdom is the smallest of the world's six plant kingdoms, but is the richest for its size, with over 8 500 distinct species, many of which grow nowhere else. Key to the diversity of the floral kingdom found throughout the Peninsula is the range of animal and insect species that have developed unique partnerships with plants. The most commonly seen animals are

the Rock Hyrax (or 'Dassie'), but it is the smaller species, such as sunbirds and sugarbirds, who perform a vital role in pollinating the range of flowering plants our mountain is so well known for.

Playing a less-visible, but no less important role, are species such as the Pugnacious Ant, which bury seeds, thus protecting them from fire and predators.

## WE'RE RESPONSIBLE

TMACC'S responsibility extends to all realms of responsible tourism, including environmental, social and economic aspects:



**We save water by:**

- Using dual-flush mechanisms in all our toilets.



- Using hand sanitisers in our ablution facilities.



- Using waterless urinals in the men's toilet at the Top Station. Our **eco-toilets** at the Top Station recycle water.



- We use compostable plates and cups because they don't need to be washed.



- We recycle more than 50% of all waste - cans, plastic, glass, paper and cardboard.



- We save electricity by: using energy saving globes and fitting geyser blankets and seasonal timers on outside lights.



- We use environmentally safe cleaning products.



- More than 95% of our retail products are locally sourced.



- We provide access to Table Mountain via our **Class in the Cloud** programme and offering concessions to community organisations.

## TABLE MOUNTAIN CABLEWAY'S PROUD ACHIEVEMENTS



**ISO 14001 certification**

for our Environmental System



**Carbon Neutral**

TMACC is Carbon Neutral. We offset carbon emissions by investing in the Kuyasa Housing Project in Khayelitsha



**OHSAS 18001 certification**

for our Health and Safety Management System



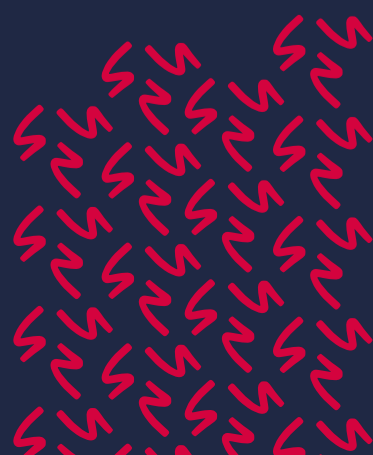
**Diamond Heritage certification**

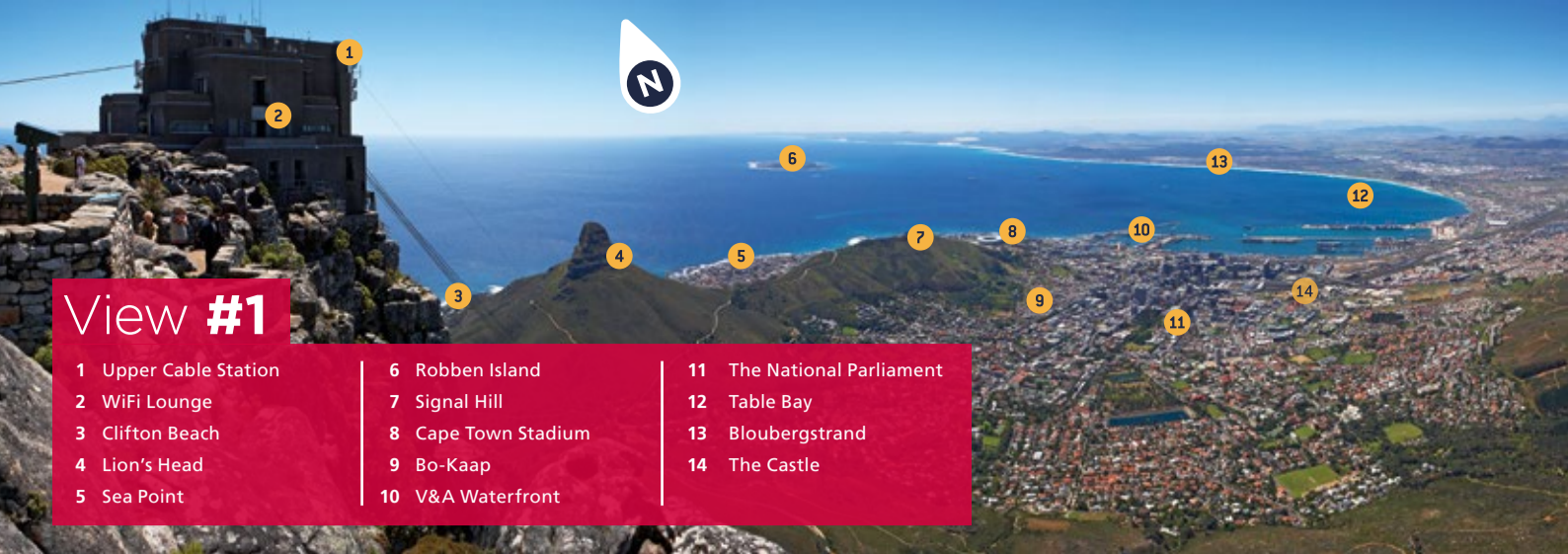
In recognition of 5 years continuous commitment to environmental performance of the highest standard



**Local is lekker**

More than 95% of our retail products are sourced locally





## View #1

- |                       |                     |                            |
|-----------------------|---------------------|----------------------------|
| 1 Upper Cable Station | 6 Robben Island     | 11 The National Parliament |
| 2 WiFi Lounge         | 7 Signal Hill       | 12 Table Bay               |
| 3 Clifton Beach       | 8 Cape Town Stadium | 13 Bloubergstrand          |
| 4 Lion's Head         | 9 Bo-Kaap           | 14 The Castle              |
| 5 Sea Point           | 10 V&A Waterfront   |                            |



### Souvenir shopping

Looking for something to remember your Table Mountain experience by? Stop in at our Shop, where you can choose from a large selection of gifts and merchandise. More than 95% of our retail products are sourced locally.

### Dine at the top

With a range of menu items designed to suit any taste, our Café (located on top of the mountain) offers a truly unique dining experience. Choose from our selection of delicious meals, snacks and drinks and top it off with a choice of our excellent range of Cape wines on offer.

### Connect with a view

Join us at our WiFi Lounge in the Top Station building for free WiFi access! With delicious snacks and beverages available, breath-taking views and the ability to upload your Cableway experience photos, our WiFi Lounge is the place to be at the summit of the mountain.

- WALKS
- VIEW POINTS
- WHEELCHAIR ROUTE
- AUDIO TOUR ROUTE

- MEETING POINT
- CAFE
- WIFI LOUNGE

- TOILETS
- SHOP
- COIN OP. BINOCULARS
- WATER FOUNTAIN
- DIRECTION FINDER
- FREE GUIDED WALKS

**NEED HELP?**  
Ask any staff member for assistance

## WALK ON THE WILD SIDE

**FREE daily guided walks on the hour from 09:00 - 15:00 depart from the Twelve Apostles Terrace**

### DASSIE WALK

**TIME:** 15 min

**TYPE:** very easy

---

**DESCRIPTION:**  
This walk offers you spectacular views north, west and south.

### AGAMA WALK

**TIME:** 30 min

**TYPE:** very easy

---

**DESCRIPTION:**  
This is a popular route. This route has been specially chosen to give you spectacular 360° views of Cape Town and the Cape Peninsula.

### KLIPSPRINGER WALK

**TIME:** 45 min

**TYPE:** very easy

---

**DESCRIPTION:**  
This walk offers wonderful views, running along the plateau edge to above the Platteklip Gorge. In summer you can see the Sunshine Cone Bush in full flower.

## WE NEED YOUR HELP PLEASE HELP US BY

**NOT** littering

**NOT** damaging or chipping the rocks

**NOT** feeding the animals

**NOT** picking the flowers

**NOT** wasting water

Staying on the footpaths

Smoking in designated areas only

Recycling: place litter in correct bins

### OUR ENVIRONMENTAL CONCERNS ARE TO

- **CONSERVE** the biodiversity of Table Mountain
- **MINIMISE** water consumption
- **REDUCE** damage caused by visitors
- **PREVENT** degradation of the vegetation
- **MINIMISE** the visual impact of Cableway facilities

## A diamond & tanzanite experience not to be missed!

Visit our world class showroom. Discover the alluring secrets of diamonds and the mysteries of the rare blue Tanzanite. Browse our impressive range of jewellery and feel at home with our friendly, multi-lingual staff.

**JEWEL AFRICA**  
*Take home a piece of Africa*

**CAPE TOWN SHOWROOM**  
170 Buitengracht Street, CT, 8001. T: +27 (0)21 424 5141  
A/H: 082 323 7393, E: capetown@jewelafrika.co.za  
Trading Hours: Mon-Fri: 09:30-19:00  
Sat & Public Holidays: 09:00-17:30, Sundays: 16:00-19:00

**JOHANNESBURG SHOWROOM**  
The Pivot at Montecasino, JHB. T: +27 (0) 11 011 9188.  
A/H: 082 901 8845, E: johannesburg@jewelafrika.co.za.  
Trading Hours: Mon-Fri: 09:00-17:00, Weekends, Public Holidays & after hours. Shopping by appointment only

Complimentary shuttle service to and from your hotel

[www.jewelafrika.com](http://www.jewelafrika.com)

## FREE TABLE MOUNTAIN CABLEWAY AUDIO TOURS

Download the **VoiceMap** App here and look for Lower and Upper Cableway Station Audio Guide

## WARNINGS

**Important notice to all persons using the Table Mountain Cableway**

- The Café, Shop, WiFi Lounge, toilet facilities, pathways and lookout points adjacent to the Upper Cable Stations; and the car park, kiosks, toilet facilities and shops adjacent to the Lower Cable Station.
- For your safety, when you hear the hooter, return immediately to the Upper Station as high winds are approaching - Upper Cable Station will be closing.
- Please remain on the demarcated pathways.
- Parents to supervise their children at all times.

Table Mountain Aerial Cableway Co (Pty) Ltd (TMACC), its directors, employees and agents shall not be liable for any consequences of any injury, damage to or loss of property from any cause whatsoever sustained by any person or legal entity while present on and/or utilising TMACC amenities. All persons enter upon and/or utilise TMACC amenities at their own risk.

TMACC amenities include, but are not limited to:

- The cable cars and their exterior and interior;
- The equipment required and utilised for the operation of the cable cars;
- The exterior and interior of the Lower and Upper Cable Stations, including the embarkation and disembarkation areas;

## NO SMOKING

Smoking is not permitted on the pathways as it is a fire hazard and a major source of litter.

Don't forget to tag us on Twitter, Facebook, Instagram and YouTube as **@TableMountainCa**

We look forward to seeing your photos!